

# Roller Banners

## Barracuda - Code WH321C **NEW**

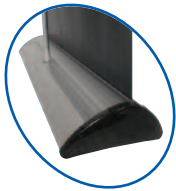
A very popular, strong but stylish design, proven as a reliable banner for regular use. Ideal for simple displays or exhibitions.

- Available in 3 widths
- Available in anodised silver
- Quick change graphic slider
- Ratchet graphic tensioner
- Larger internal graphic housing
- Universal grippa/adhesive top rail
- Telescopic pole

**Visible Graphic Area:**

**H - 750 - 2130mm**  
**W - 800/1000/1200mm**

(All sizes are approximate)



## Excaliber 1 and 2 **NEW**

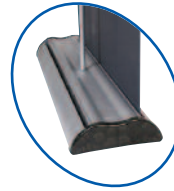
A popular and versatile banner, ideal for exhibition or showroom graphic display.

- Excaliber 2 can be used as a single or double-sided unit
- Wide footprint for extra stability
- Available in 4 widths
- Available in anodised silver
- Quick change graphic slider
- Ratchet graphic tensioner
- Larger internal graphic housing
- Universal grippa/adhesive top rail
- Telescopic pole

**Visible Graphic Area:**

**H - 750 - 2130mm**  
**W - 800 - 1500mm**

(All sizes are approximate)



WH301C (single)

WH311C (double)



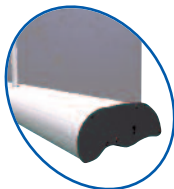
## Original Banner 2 - Code UB321 **Improved**

- Increased internal housing for thicker graphics (up to 450 microns)
- Quick-change graphic release
- Quick-change Twista Plus snap rail
- Anodised silver or textured black powdercoat
- Bungee pole
- Available in 4 widths

**Visible Graphic Area:**

**H - 2145mm**  
**W - 600 - 1200mm**

(All sizes are approximate)



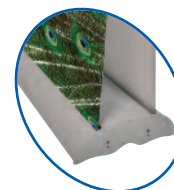
## Original Banner 3 **Improved**

- Increased internal housing for thicker graphics (up to 450 microns)
- Quick-change graphic release
- Quick-change Twista Plus snap rail
- Anodised silver or textured black powdercoat
- Bungee pole
- Available in 6 widths

**Visible Graphic Area:**

**H - 2145mm**  
**W - 600 - 2000mm**

(All sizes are approximate)



UB301 (single)

UB311 (double)

